

Association of ERCC1 rs3212986 & ERCC2 rs13181 polymorphisms with the risk of glioma

Qing-ke Cui¹, Jian-xin Zhu², Wei-dong Liu³,
Yun-hua Wang⁴, Zhi-gang Wang⁵

ABSTRACT

Objective: Several previous studies have reported the role variant of ERCC1 rs3212986 and ERCC2 rs13181 polymorphisms in the risk of glioma, but the results of these studies are inconsistent. Therefore, we aimed to conduct a meta-analysis to investigate the role of ERCC1 rs3212986 and ERCC2 rs13181 on the risk of glioma.

Methods: A comprehensive research was conducted through the databases of Pubmed, EMBASE and the China National Knowledge Infrastructure (CNKI) platforms until June 1, 2014, including 14 eligible case-control studies.

Results: Our meta-analysis found that ERCC1 rs3212986 AA genotype was significantly associated with increased risk of glioma compared with CC genotype, and the pooled OR (95%CI) was 1.29(1.07-1.55). By subgroup analysis, ERCC1 rs3212986 AA genotype was found to be significantly correlated with increased glioma risk in Chinese population (OR=1.37, 95%CI=1.07, 1.55). Similarly, we found that ERCC2 rs13181 GT and TT genotypes were significantly associated with increased risk of glioma in Chinese population, with ORs(95%CI) of 1.47(1.17-1.85) and 1.50(1.02-2.22). But ERCC1 rs3212986 and ERCC2 rs13181 polymorphisms had no significant association with glioma risk in Caucasian populations. By begg's funnel plot, we found that no publication bias was existed in this meta-analysis.

Conclusion: Our meta-analysis suggested that ERCC1 rs3212986 and ERCC2 rs13181 polymorphism play an important risk factor for brain tumor development in Chinese population, but no association in Caucasian populations.

KEY WORDS: ERCC1, ERCC2, Polymorphism, Glioma.

doi: <http://dx.doi.org/10.12669/pjms.306.5221>

How to cite this:

Cui QK, Zhu JX, Liu WD, Wang YH, Wang ZG. Association of ERCC1 rs3212986 & ERCC2 rs13181 polymorphisms with the risk of glioma. *Pak J Med Sci* 2014;30(6):1409-1414. doi: <http://dx.doi.org/10.12669/pjms.306.5221>

This is an Open Access article distributed under the terms of the Creative Commons Attribution License (<http://creativecommons.org/licenses/by/3.0>), which permits unrestricted use, distribution, and reproduction in any medium, provided the original work is properly cited.

1. Qing-ke Cui,
Dept. of Neurosurgery, The Qilu Hospital of Shandong University,
Jinan Shandong, 250012, P. R. China.
 2. Jian-xin Zhu,
 3. Wei-dong Liu,
 4. Yun-hua Wang,
 5. Zhi-gang Wang
- 1-5: Department of Neurosurgery,
Liaocheng People's Hospital, Liaocheng
Shandong, 252000, P. R. China.

Correspondence:

Zhi-Gang Wang,
Department of Neurosurgery,
Liaocheng People's Hospital, Liaocheng Shandong,
252000, P. R. China
E-mail: zhaojunhui699@126.com

- * Received for Publication: March 7, 2014
- * Revision Received: July 16, 2014
- * Revision Accepted: August 4, 2014

INTRODUCTION

Gliomas are the most common occurring type of brain tumors worldwide, accounting for approximately 80% of all malignant brain tumors.¹ In 2000, it is estimated that the annual incidence of brain tumor was about 3.9/105 in men and 2.8 per 10⁵ in women in Chinese population, and it is about 2-3 per 100,000 in Europe and North America.²⁻⁴ The incidence of brain tumors has increased in recent several years, and the incidence shows significant different in terms of gender, age, race, ethnicity, and even geographical region.^{5,6} However, the real etiology of glioma is still not well understood. Previous studies reported that mutations of many genes can affect the risk of glioma.⁷⁻⁹

It is well known that changes in DNA induced by exposure to environmental and endogenous agents may result in genetic instability and mutagenesis. DNA repair mechanisms play an important role in maintaining genomic integrity and preventing carcinogenesis. Therefore, if genetic variations in DNA repair genes change the amount or activity of the proteins that they encode, they might also increase the risk of disease and the risk of cancer in particular. Excision repair cross complementation group 1 (ERCC1) and ERCC2 lie on chromosome 19q13.3, and they play an important role in NER pathway.¹⁰

Several previous studies have reported the role variant of ERCC1 rs3212986 and ERCC2 rs13181 polymorphisms in the risk of glioma, but the results of these studies are inconsistent. Therefore, we aimed to conduct a meta-analysis to investigate the role of ERCC1 rs3212986 and ERCC2 rs13181 on the risk of glioma.

METHODS

Search strategy: A comprehensive research was conducted through the databases of Pubmed, EMBASE and the China National Knowledge Infrastructure (CNKI) platforms until June 1, 2014. The literature search was conducted using the following terms: “glioma” or “brain tumor”, “polymorphism” or “variant”, and “ERCC1 C8092A”, “ERCC2 Lys751Gln”, “rs3212986” or “rs13181”. The reference lists of articles included for review and past meta-analyses were examined for any further relevant publications. No publication date or language restrictions were applied.

Study selection: The inclusion criteria for studies were as follows: studies are case-control design; studies evaluated the association between ERCC1 rs3212986 and ERCC2 rs13181 polymorphisms and glioma risk; studies reported the results of available genotype frequencies.

The exclusion criteria for studies were as follows: articles only have an abstract, review articles and comments; studies are overlapped with other studies; studies have no comparison or control group; studies have no data of genotype frequencies. Corresponding authors were contacted in an attempt to obtain unreported genotype counts if studies were otherwise eligible.

Data extraction

Two authors independently screened the electric search with all terms. Duplications and obviously irrelevant studies were excluded according to the exclusion criteria. We extracted the full texts of all eligible studies according to the inclusion criteria. The study ID, study design, participation number, case-control number and genotype information were extracted for each eligible study.

Statistical analysis: All meta-analysis analysis was conducted by STATA 9.0 software. A chi-square (χ^2) was taken to evaluate the Hardy-Weinberg equilibriums in control groups. The pooled odds ratios (OR) and 95% confidence interval (CI) were taken to calculate the role of ERCC1 rs3212986 and ERCC2 rs13181 polymorphisms on the risk of glioma. The heterogeneity between studies was estimated by I^2 test and heterogeneity Q statistic test. When I^2 were at the range of 0-25%, there was no degree of heterogeneity. When I^2 were at the range of 25-50%, there was moderate heterogeneity. When I^2 were at

Table-I: Meta-analysis of the association of ERCC1 rs3212986 polymorphism with the glioma risk

| Study ID | Country | | Cases | | | Total cases | Controls | | | Total controls | P for HWE | OR(95% CI) ¹ | |
|---------------------|---------|-----------|-------|------|-----|-------------|----------|------|-----|----------------|-----------|-------------------------|-----------------|
| | | | CC | CA | AA | | CC | CA | AA | | | CA vs CC | AA vs CC |
| Chen P | 2000 | Caucasian | 73 | 43 | 6 | 122 | 81 | 70 | 8 | 159 | 0.47 | 0.68(0.42-1.12) | 0.83(0.28-2.51) |
| Wrensch M | 2005 | Caucasian | 206 | 144 | 25 | 393 | 237 | 184 | 23 | 410 | 0.09 | 0.90(0.68-1.20) | 1.25(0.69-2.27) |
| Liu Y | 2009 | Caucasian | 208 | 130 | 31 | 72 | 219 | 126 | 17 | 302 | 0.83 | 1.09(0.80-1.48) | 1.92(1.03-3.57) |
| McKean-Cowdin R | 2009 | Caucasian | 557 | 361 | 59 | 369 | 1087 | 728 | 105 | 362 | 0.24 | 0.97(0.82-1.14) | 1.10(0.78-1.53) |
| Chen DQ | 2012 | Chinese | 202 | 141 | 50 | 977 | 221 | 154 | 35 | 1920 | 0.28 | 1.00(0.74-1.35) | 1.56(0.97-2.51) |
| Zhang N | 2012 | Chinese | 123 | 98 | 36 | 443 | 144 | 105 | 29 | 444 | 0.14 | 1.09(0.76-1.58) | 1.45(0.84-2.51) |
| Pan WR | 2013 | Chinese | 229 | 169 | 45 | 375 | 241 | 162 | 41 | 444 | 0.08 | 0.10(0.83-1.45) | 1.16(0.73-1.83) |
| Dong YS | 2014 | Chinese | 33 | 32 | 7 | 257 | 137 | 144 | 21 | 278 | 0.94 | 0.92(0.54-1.58) | 1.38(0.54-3.53) |
| Pooled results | | | 1631 | 1118 | 259 | 3008 | 2367 | 1673 | 279 | 4319 | | 0.98(0.89-1.09) | 1.29(1.07-1.55) |
| P for heterogeneity | | | | | | | | | | | | 0.793 | 0.762 |
| I ² test | | | | | | | | | | | | 0% | 0% |

OR: odds ratio; CI: confidence interval; HWE: Hardy-Weinberg equilibrium. 1P < 0.05, it was considered statistically significant.

Table-II: Meta-analysis of the association of ERCC2 rs13181 with the glioma risk.

| Study ID | Ethnicity | Cases | | | Total | Controls | | | Total | P for HWE | OR(95%CI) ¹ | | |
|-----------------------|-----------|-----------|-----|------|-------|----------|------|------|-------|-----------|------------------------|------------------|------------------|
| | | GG | GT | TT | | GG | GT | TT | | | CT vs GG | TT vs GG | |
| Caggana M | 2001 | Caucasian | 23 | 63 | 62 | 148 | 23 | 76 | 49 | 148 | 0.46 | 0.83(0.43,1.62) | 1.27(0.64,2.52) |
| Wrensch M | 2005 | Caucasian | 57 | 169 | 139 | 365 | 55 | 213 | 164 | 432 | 0.27 | 0.77(0.50,1.17) | 0.82(0.53,1.26) |
| Liu Y | 2009 | Caucasian | 56 | 172 | 139 | 367 | 45 | 156 | 161 | 362 | 0.45 | 0.89(0.57,1.39) | 0.69(0.44,1.09) |
| McKean-Cowdin R | 2009 | Caucasian | 143 | 480 | 376 | 989 | 256 | 891 | 823 | 1970 | 0.54 | 0.96(0.76,1.22) | 0.82(0.64,1.04) |
| Rajaraman P | 2010 | Caucasian | 52 | 171 | 128 | 351 | 66 | 215 | 200 | 481 | 0.5 | 1.01(0.67,1.53) | 0.81(0.53,1.24) |
| Salnikova LE | 2013 | Caucasian | 100 | 135 | 49 | 284 | 171 | 217 | 71 | 459 | 0.87 | 1.06(0.76-1.50) | 1.18(0.74-1.87) |
| Rodriguez-Hernandez I | 2014 | Caucasian | 51 | 59 | 5 | 115 | 92 | 80 | 28 | 200 | 0.13 | 1.33(0.80-2.21) | 0.32(0.09-0.92) |
| Yang D | 2005 | Chinese | 103 | 32 | 0 | 135 | 41 | 3 | 0 | 44 | 0.81 | 4.24(1.21-22.71) | - |
| Chen DQ | 2012 | Chinese | 139 | 198 | 56 | 393 | 175 | 186 | 49 | 410 | 0.97 | 1.34(0.99,1.81) | 1.44(0.92,2.24) |
| Luo KQ | 2013 | Chinese | 230 | 58 | 9 | 297 | 343 | 62 | 10 | 415 | 0.03 | 1.40(0.94,2.07) | 1.34(0.54,3.35) |
| Zhang X | 2013 | Chinese | 3 | 6 | 3 | 12 | 20 | 13 | 3 | 36 | 0.67 | 3.08(0.53-21.83) | 6.67(0.56-74.27) |
| Pooled results | | | 957 | 1543 | 966 | 3456 | 1287 | 2112 | 1558 | 4957 | | 1.09(0.97-1.23) | 0.90(0.78-1.04) |
| P for heterogeneity | | | | | | | | | | | | 0.11 | 0.07 |
| I ² test | | | | | | | | | | | | 36.40% | 45.30% |

OR: odds ratio; CI: confidence interval; HWE: Hardy-Weinberg equilibrium. aP < 0.05, it was considered statistically significant.

the range of 75-100%, there was great heterogeneity. A random-effects model or fixed-effect model was taken to calculate the pooled OR (95%CI) according to the degree of heterogeneity between studies. The publication bias in studies was calculated using Begg's funnel plot and Egger's test.

RESULTS

Characteristics of eligible publications: Our comprehensive literature search identified a total of 57 studies for ERCC1 rs3212986 and ERCC2 rs13181 based on their titles. Finally, 14 eligible case-control studies were selected, including eight studies for ERCC1 C8092A and 11 studies for ERCC2 Lys751Gln.¹¹⁻²⁴

Eight studies reported the association between ERCC1 rs3212986 polymorphism and glioma risk, including 3008 glioma cases and 4319 controls (Table-I).¹¹⁻¹⁸ 11 studies reported the association between ERCC2 Lys751Gln polymorphism and glioma risk, including 3456 glioma cases and 4957 controls (Table-II).^{12-15,19-25} Six studies were conducted in Chinese population, and the other seven studies were conducted in Caucasian populations.

The genetic distributions of ERCC1 rs3212986 in eight studies and ERCC2 rs13181 in nine studies were in according to Hardy-Weinberg Equilibrium (HWE). Only one study about ERCC2 rs13181 deviated from Hardy-Weinberg equilibrium in the control groups.

There was no significant heterogeneity between pooled studies, and thus we performed a fixed-effect

model to assess the association between ERCC1 rs3212986 and ERCC2 rs13181 and risk of glioma. Our meta-analysis found that ERCC1 8092 AA genotype was significantly associated with increased risk of glioma compared with CC genotype, and the pooled OR (95%CI) was 1.29(1.07-1.55). However, we did not find significant association between ERCC2 rs13181 polymorphisms and risk of glioma. By subgroup analysis, ERCC1 rs3212986 AA genotype was found to be significantly correlated with increased glioma risk in Chinese population (OR=1.37, 95%CI=1.07, 1.55) (Fig.1). Similarly, we found that ERCC2 rs13181 GT and TT genotypes were significantly associated with increased risk

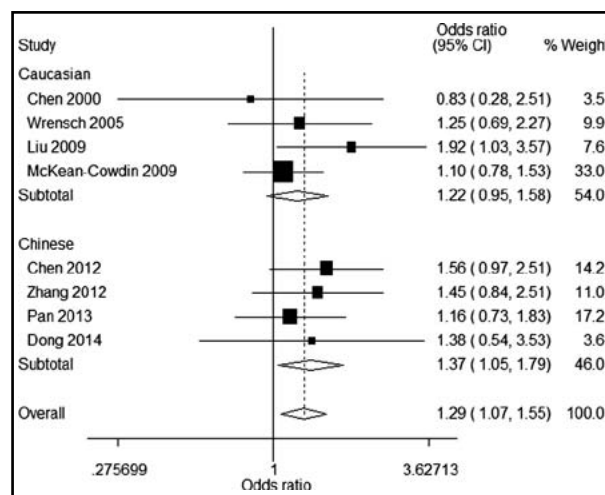


Fig.1: Subgroup analysis for the role of ERCC1 rs3212986 AA on the glioma risk.

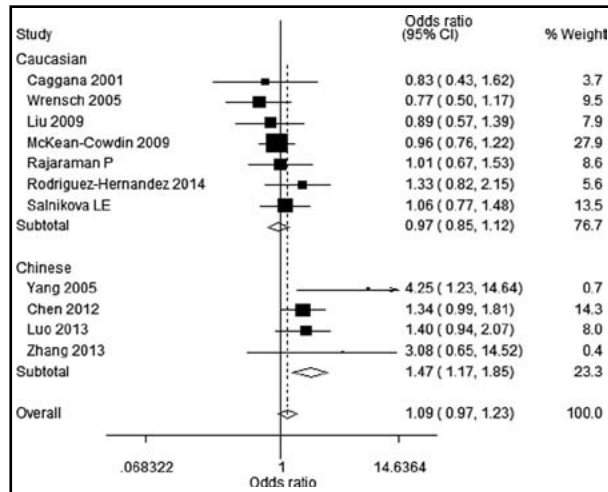


Fig.2: Subgroup analysis for the role of ERCC2 rs13181 GT on the glioma risk.

of glioma in Chinese population, with ORs(95%CI) of 1.47(1.17-1.85) and 1.50(1.02-2.22). But ERCC1 rs3212986 and ERCC2 rs13181 polymorphisms had no significant association with glioma risk in Caucasian populations (Fig.2 and Fig.3).

By begg's funnel plot, we found that the shapes of the funnel plots for ERCC1 rs3212986 and ERCC2 rs13181 were symmetry, which suggests no publication bias in this meta-analysis (Fig.4 and Fig.5). Moreover, sensitivity analysis showed that the pooled OR did not alter after excluding one largest sample size study.

DISCUSSION

To the best of our knowledge, the current meta-analysis comprehensively analyze the association between ERCC1 rs3212986 and ERCC2 rs13181 polymorphism and glioma risk. The results of this meta-analysis suggest that the ERCC1 rs3212986 and ERCC2 rs13181 polymorphism polymorphisms

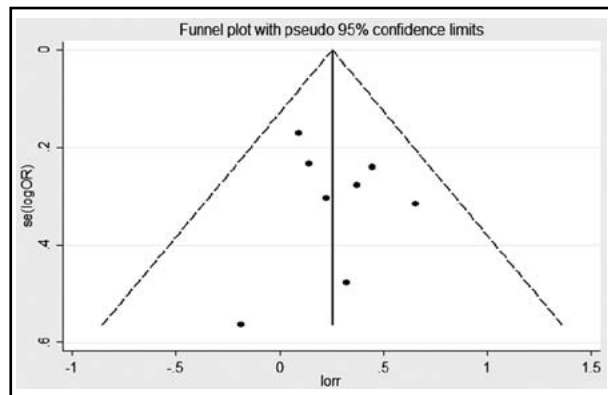


Fig.4: Funnel plots of the association between ERCC1 rs3212986 polymorphism and risk of glioma.

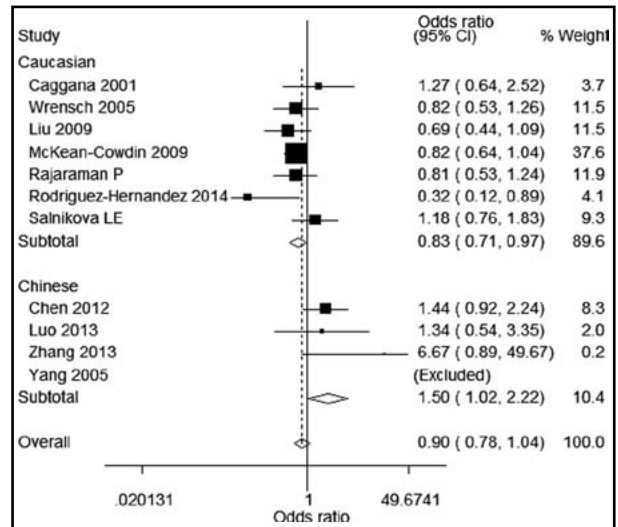


Fig.3: Subgroup analysis for the role of ERCC2 rs13181 TT on the glioma risk

was significantly associated with increased risk of glioma in Chinese population, but no association in Caucasian Chinese.

ERCC1 and ERCC2 genes are two important rate-limiting enzymes, and they play a role in the NER process. ERCC1 is a subunit of the NER complex, and ERCC1 usually interacts with XPA, XPF and RPA and can guides 5' cleavage activity during the process of NER.^{26,27} Deficient of ERCC1 expression usually shows a high mutation frequency, an increased level of genomic instability and decreased S-phase-dependent illegitimate chromosome exchange, and it can cause a response adopted by rodent cells to prevent the accumulation of DNA double strand breaks.²⁸ ERCC2 is located at chromosome 19q13.3, and this gene possesses both single strand DNA-dependent ATPase and 5'-3' DNA helicase activities and participates in DNA unwinding during the process of NER pathway.^{29,30}

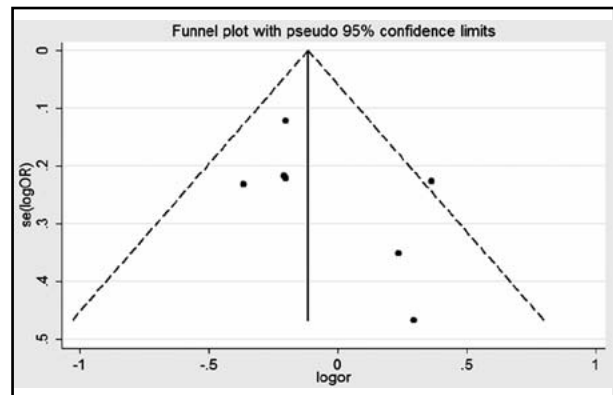


Fig.5: Funnel plots of the association between ERCC2 rs13181 polymorphism and risk of glioma

Variants of ERCC2 gene is reported to have a role in decreasing the helicase activity, causing a lower DNA repair capacity of NER pathway and affecting the risk of cancer.^{31,32} Therefore, variants of ERCC1 and ERCC2 genes can influence the cellular DNA repair capacity and affect the susceptibility to glioma risk.^{11,19} Our meta-analysis demonstrated that ERCC1 rs3212986 polymorphism was significantly associated with glioma risk, but ERCC2 rs13181 polymorphism was not correlated with glioma risk. When conducting stratified analysis by ethnicity, ERCC1 rs3212986AA, ERCC2 rs13181 GT and TT genotypes was associated with increased risk of glioma in Chinese population. But there was no significant increased risk in Caucasian population. Our study suggests that ERCC1 rs3212986 and ERCC2 rs13181 showed different effect on the risk of glioma across different populations.

In our study, we did not detect significant difference between-study heterogeneity of all included case-control studies, and the pooled OR did not alter using the sensitivity analysis. Our study indicates that the results of our study are robust and high stable.

Several limitations in our study should be considered. First, the sample size of cases and controls in the stratified analysis was relatively small, which could reduce the statistical power to find the difference between groups. Second, the studies involving Asian patients were too limited to identify precise gene associations. Third, we could not perform a stratified analysis according to ethnicity because of insufficient data. Future studies may address the effect of the ERCC1 rs3212986 and ERCC2 rs13181 polymorphism on different histological brain tumor subtypes to provide a better understanding of tumor pathogenesis.

In summary, our meta-analysis suggested that ERCC1 rs3212986 and ERCC2 rs13181 polymorphism play an important risk factor for brain tumor development in Chinese population, but has no association in Caucasian populations. Since potential biases and confounders could not be completely excluded from this meta-analysis, further studies with larger sample sizes and standardized, unbiased genotyping methods are warranted to confirm our findings.

REFERENCE

1. Omuro A, DeAngelis LM. Glioblastoma and other malignant gliomas: A clinical review. *JAMA*. 2013 Nov 6;310(17):1842-50. doi: 10.1001/jama.2013.280319.
2. Ohgaki H, Kleihues P. Epidemiology and etiology of gliomas. *Acta Neuropathol*. 2005;109(1):93-108.
3. Paternoster L, Howe LD, Tilling K, Weedon MN, Freathy RM, Frayling TM, Kemp JP, Smith GD, Timpson NJ, Ring SM, Evans DM, Lawlor DA. Adult height variants affect birth length and growth rate in children. *Hum Mol Genet*. 2011;20(20):4069-75. doi: 10.1093/hmg/ddr309.
4. Porter KR, McCarthy BJ, Freels S, Kim Y, Davis FG. Prevalence estimates for primary brain tumors in the United States by age, gender, behavior, and histology. *Neuro Oncol*. 2010 Jun;12(6):520-7. doi: 10.1093/neuonc/nop066.
5. Patel S, Bhatnagar A, Wear C, Osiro S, Gabriel A, Kimball D, et al. Are pediatric brain tumors on the rise in the USA? Significant incidence and survival findings from the SEER database analysis. *Child's nervous system: ChNS: official journal of the International Society for Pediatric Neurosurgery*. 2014. Jan;30(1):147-54. doi: 10.1007/s00381-013-2307-1.
6. Fisher JL, Schwartzbaum JA, Wrensch M, Wiemels JL. Epidemiology of brain tumors. *Neurologic clinics*. 2007 Nov;25(4):867-90. doi: 10.1016/j.ncl.2007.07.002
7. Qin LY, Zhao LG, Chen X, Li P, et al (2014). The CCND1 G870A gene polymorphism and brain tumor risk: a meta-analysis. *Asian Pac J Cancer Prev*, 15(8):3607-3612. doi:http://dx.doi.org/10.7314/APJCP.2014.15.8.3607
8. Wei XB, Jin TB, Li G, Geng TT, et al (2014). CCDC26 gene polymorphism and glioblastoma risk in the Han Chinese population. *Asian Pac J Cancer Prev*, 15(8):3629-3633. doi:http://dx.doi.org/10.7314/APJCP.2014.15.8.3629
9. Dong YS, Hou WG, Li XL, Jin TB, Li Y, Feng DY, Liu DB, Gao GD, Yin ZM, Qin HZ. Genetic association of CHEK2, GSTP1, and ERCC1 with glioblastoma in the Han Chinese population. *Tumour Biol*. 2014 May;35(5):4937-41. doi: 10.1007/s13277-014-1648-z.
10. Kidane D, Chae WJ, Czochor J, Eckert KA, Glazer PM, Bothwell AL, et al. Interplay between DNA repair and inflammation, and the link to cancer. *Crit Rev Biochem Mol Biol*. 2014 Mar-Apr;49(2):116-39. doi: 10.3109/10409238.2013.875514.
11. Chen P, Wiencke J, Aldape K, Kesler-Diaz A, Miike R, Kelsey K, et al. Association of an ERCC1 polymorphism with adult-onset glioma. *Cancer Epidemiol Biomarkers Prev*. 2000 Aug;9(8):843-7.
12. Wrensch M, Kelsey KT, Liu M, Miike R, Moghadassi M, Sison JD, et al. ERCC1 and ERCC2 polymorphisms and adult glioma. *Neuro Oncol*. 2005 Oct;7(4):495-507. doi: 10.1016/j.ncl.2007.07.002
13. Liu Y, Scheurer ME, El-Zein R, Cao Y, et al (2009). Association and interactions between DNA repair gene polymorphisms and adult glioma. *Cancer Epidemiol Biomarkers Prev*, 18(1):204-214. doi: 10.1158/1055-9965.EPI-08-0632.
14. McKean-Cowdin R, Barnholtz-Sloan J, Inskip PD, Ruder AM, et al (2009). Associations between polymorphisms in DNA repair genes and glioblastoma. *Cancer Epidemiol Biomarkers Prev*, 18(4):1118-1126. doi: 10.1215/S1152851705000037
15. Chen DQ, Yao DX, Zhao HY, Yang SJ (2012). DNA repair gene ERCC1 and XPD polymorphisms predict glioma susceptibility and prognosis. *Asian Pac J Cancer Prev*. 2012;13(6):2791-2794. doi:http://dx.doi.org/10.7314/APJCP.2012.13.6.2791
16. Zhang N, Lin LY, Zhu LL, Wu F, Wen H, Pan D, et al. ERCC1 polymorphisms and risk of adult glioma in a Chinese population: a hospital-based case-control study. *Cancer Invest*. 2012 Mar;30(3):199-202. doi: 10.3109/07357907.2011.651233.
17. Pan WR, Li G, Guan JH. Polymorphisms in DNA repair genes and susceptibility to glioma in a Chinese population. *Int J Mol Sci*. 2013;14(2):3314-24. doi: 10.3390/ijms14023314.

18. Dong YS, Hou WG, Li XL, Jin TB, Li Y, Feng DY, et al. Genetic association of CHEK2, GSTP1, and ERCC1 with glioblastoma in the Han Chinese population. *Tumour Biol.* 2014 May;35(5):4937-41. doi: 10.1007/s13277-014-1648-z.
19. Caggana M, Kilgallen J, Conroy JM, Wiencke JK, Kelsey KT, Miike R, Chen P, Wrensch MR.. Associations between ERCC2 polymorphisms and gliomas. *Cancer Epidemiol Biomarkers Prev*, 2001; 10(4): 355-360.
20. Rajaraman P, Hutchinson A, Wichner S, Black PM, Fine HA, Loeffler JS, Selker RG, Shapiro WR, Rothman N, Linet MS, Inskip PD. DNA repair gene polymorphisms and risk of adult meningioma, glioma, and acoustic neuroma. *Neuro Oncol*, 2010; 12(1):37-48. doi: 10.1093/neuonc/nop012.
21. Salnikova LE, Belopolskaya OB, Zelinskaya NI, Rubanovich AV. The potential effect of gender in CYP1A1 and GSTM1 genotype-specific associations with pediatric brain tumor. *Tumour biology : the journal of the International Society for Oncodevelopmental Biology and Medicine*, 2013;34(5):2709-2719. doi: 10.1007/s13277-013-0823-y.
22. Rodriguez-Hernandez I, Perdomo S, Santos-Briz A, Garcia JL, et al (2014). Analysis of DNA repair gene polymorphisms in glioblastoma. *Gene*, 536(1):79-83. doi: 10.1016/j.gene.2013.11.077.
23. Yang D, Li QG, Zhang YZ, Wang HY, Luo YN, Jiang CL, et al. Comparison of screen for single nucleotide polymorphisms of the glioma susceptibility gene - ERCC2 by using denaturing high performance liquid chromatography and restriction fragment length polymorphism. *Chinese Journal of Minimally Invasive Neurosurgery*. 2005;10(4):164-6.
24. Luo KQ, Mu SQ, Wu ZX, Shi YN, Peng JC. Polymorphisms in DNA repair genes and risk of glioma and meningioma. *Asian Pac J Cancer Prev*. 2013;14(1):449-52. doi:http://dx.doi.org/10.7314/APJCP.2013.14.1.449
25. Zhang X. Correlation of ERCC2 K751Q polymorphism, EGF +61G/A polymorphism and the risk of glioma. *Soochow University*. 2013.
26. Volker M, Mone MJ, Karmakar P, van Hoffen A, Schul W, Vermeulen W, et al. Sequential assembly of the nucleotide excision repair factors in vivo. *Molecular cell*. 2001;8(1):213-24. doi: http://dx.doi.org/10.1016/S1097-2765(01)00281-7.
27. Sijbers AM, de Laat WL, Ariza RR, Biggerstaff M, Wei YF, Moggs JG, et al. Xeroderma pigmentosum group F caused by a defect in a structure-specific DNA repair endonuclease. *Cell*. 1996;86(5):811-22. doi: http://dx.doi.org/10.1016/S0092-8674(00)80155-5
28. Melton DW, Ketchen AM, Nunez F, Bonatti-Abbondandolo S, Abbondandolo A, Squires S et al. Cells from ERCC1-deficient mice show increased genome instability and a reduced frequency of S-phase-dependent illegitimate chromosome exchange but a normal frequency of homologous recombination. *Journal of cell science*. 1998;111 (Pt 3):395-404.
29. Sung P, Bailly V, Weber C, Thompson LH, Prakash L, Prakash S. Human xeroderma pigmentosum group D gene encodes a DNA helicase. *Nature*. 1993;365(6449):852-5. doi:10.1038/365852a0.
30. de Boer J, Hoeijmakers JH. Nucleotide excision repair and human syndromes. *Carcinogenesis*. 2000;21(3):453-60. doi: 10.1093/carcin/21.3.453
31. Zhang J, Gu SY, Zhang P, Jia Z, Chang JH. ERCC2 Lys751Gln polymorphism is associated with lung cancer among Caucasians. *Eur J Cancer*. 2010;46(13):2479-84. doi:10.1016/j.ejca.2010.05.008.
32. Xue H, Lu Y, Lin B, Chen J, Tang F, Huang G. The effect of XPD/ERCC2 polymorphisms on gastric cancer risk among different ethnicities: a systematic review and meta-analysis. *PloS one*. 2012;7(9):e43431. doi:10.1371/journal.pone.0043431.

Author's Contribution:

Contribution QKC and ZGW conceived, designed and did statistical analysis & editing of manuscript. JXZ, WDL & YHW did data collection and manuscript writing.